

ONEWOOD®



ONEWOOD - CARELESS BEAUTY

TERRACES

OneWood is a company that produces terrace, fence and façade boards of the wood plastic composite material in Estonia. The composition of the products are developed for the use in Nordic climate, by containing the best combination of wood (60%), plastic (30%) and additives (10%). This combination of materials provides a natural wooden look to the products, ensures long-lasting durability and insignificant maintenance costs. The products are weatherproof, do not need oiling or staining, do not separate surfaces and are not slippery even with wet weather. OneWood products change the way of thinking regarding the maintenance and safe use of terraces, fences, facades and garden furniture. You'll find information about our products on our homepage: www.onewood.ee



TERRACES

Terrace boards are available with five different surface treatments: Classic, Natural, Basic, Modern and Modern L. Standard selection has two different profiles and four different stain colours.



FENCES

Fence boards are available with two different surface treatment: Natural and Basic. Standard selection has four different stain colours.



FACADES

Facade boards are available with Basic surface treatment and standard selection has four different stain colours.

CONTENT

ADVANTAGES

4

TECHNICAL
CHARACTERISTICS

4

PRODUCTS

5

INSTALLATION

8

MAINTENANCE

10

WARRANTY

11

ADVANTAGES



100% recyclable



Anti-slip



Does not need staining or oiling



Splinter-free



Estonian product



Weatherproof



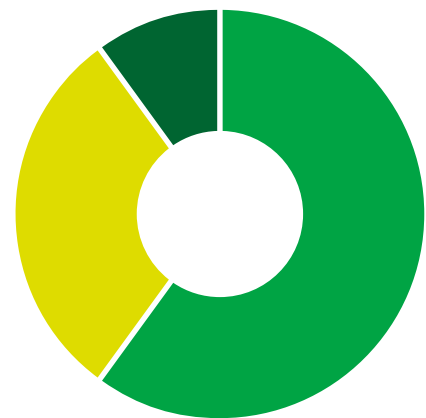
Easy install

TECHNICAL CHARACTERISTICS

Wood plastic composite is an ecological modern wood material and is 100% recyclable. The material is produced from wood and plastic mixture and additional additives are added into the product to protect it against environmental influences (UV protection, colorant, adhesive, stabilizers etc.). The composition of OneWood terrace boards is developed for the use in Nordic climate, which highlights the best qualities of wood and plastic as well: long-term durability, natural beauty of timber and easy maintenance (does not

need oiling or staining). Additionally the products are processed against slippery, which makes the use of a terrace safe also with wet weather.

Tests. The long-term durability and high-quality of the OneWood products are verified by the tests carried out by Tallinn University of Technology, which meet the international standards of wood plastic composite materials.



- 60% wood
- 30% plastic
- 10% additives

Quality	Standard	Unit	Value
Density/specific gravity		kg/m ³	1380
Bending strength	ISO 16616:2015(E)	MPa	44,02
Elastic modulus	EVS-EN 15534-1:2014	MPa	5054,78
Impact strenght	EVS-EN ISO 179-1	kJ/m ²	20,46
Water absorbency 28p	EVS-EN 317:2000	%	2,46
Swelling 28p	EVS-EN 15534-1:2014	%	0,54
Thermal expansion	EVS-EN 479:2003	%	0,04
Consumption index	ASTM D4060-14	-	0,000204
Color change (ΔE) 2000h UV-d	EVS-EN 15534-1:2014	-	2,2
Fire resistance	EVS-EN 13501-1:2007+A1:2009	Klass C _{F1}	

TERRACE BOARD PROFILES



LIGHT is a hollow profile, which has a good strength and weight ratio, which makes the LIGHT profile the most popular terrace board. Area of application: terraces, balconies, pathways, pergolas etc.



STRONG is a solid profile, which qualities are most suitable for public areas like outdoor terraces of hotels and municipal buildings, pathways, outdoor cafes, shopping centres, harbours etc.

RANGE OF PRODUCTS

OneWood product range comprises terrace boards with five different surface treatments: Classic (grooved), Natural (wood patterned) Basic (brushed), Modern (middle grooves), Modern L (wide grooves) surface. The standard range of stain colours includes four different most popular colours: white, brown, dark brown and grey. Modern and Modern L surface treatments are available as LIGHT profile. Natural, Classic and Basic surface treatments are available as STRONG profile. Standard length of the terrace tables is 4.2 m. On request, it is possible to have other lengths according to the selected profile up to 5.2 m.

STRONG PROFILE

LIGHT PROFILE

CLASSIC

NATURAL

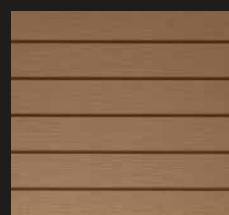
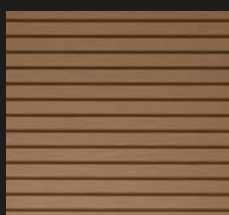
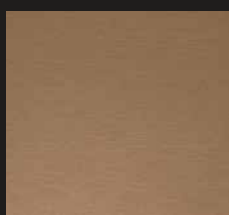
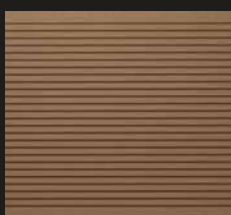
BASIC

MODERN

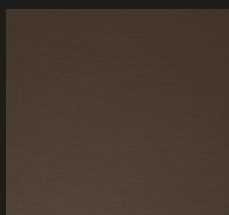
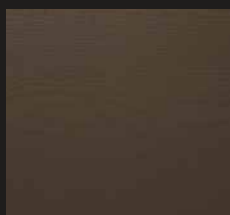
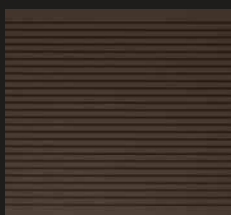
MODERN L



WHITE



BROWN



DARK BROWN

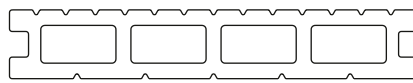


GREY

In addition to standard stained colours, depending of the quantity it is possible to order tailor-made stained colours, more information is available at our sales department.

SELECTION OF TERRACE BOARDS

LIGHT, surface treatment Modern and Modern L

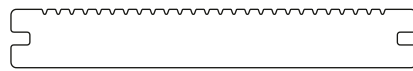


Colors



Width	150 mm
Thickness	25 mm
Length	4200 mm
Weight	3,0 kg/m
Consumption	6,5 m/m ²

STRONG, surface treatment Classic and Basic

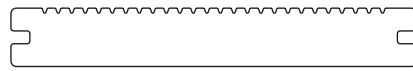


Colors



Width	148 mm
Thickness	20 mm
Length	4200 mm
Weight	4,0 kg/m
Consumption	6,5 m/m ²

STRONG, surface treatment Natural and Classic



Colors



Width	148 mm
Thickness	20 mm
Length	4200 mm
Weight	4,0 kg/m
Consumption	6,5 m/m ²

STRONG edge board, surface treatment Basic



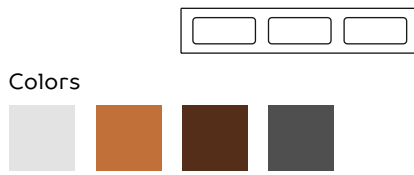
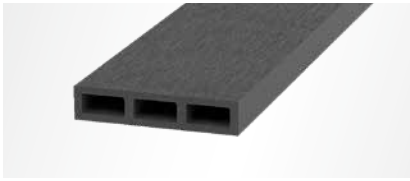
Colors



Width	80 mm
Thickness	15 mm
Length	4200 mm
Weight	1,6 kg/m

BORDERS, BEAMS AND FASTENINGS

LIGHT edge board, surface treatment Basic



Width	100 mm
Thickness	20 mm
Length	4200 mm
Weight	1,4 kg/m

Corner board, surface treatment Basic



Width	42x42 mm
Thickness	5 mm
Length	4200 mm
Weight	0,6 kg/m

Beam STRONG



Width	40 mm
Thickness	30 mm
Length	2900 mm
Weight	1,0 kg/m

Fixing clip



Dimensions	34x40 mm
Material	Stainless steel AISI 304

Starter clip



Dimensions	25x29 mm
Material	Stainless steel AISI 304

Screws



Dimensions	M4x25 mm
Screw head type	Torx
Material	Stainless steel AISI 304

INSTALLATION

STORAGE

Avoid dragging and throwing the boards while loading and storing. Terrace boards should be stored horizontally on the flat surface, preferably in an original package, on a wooden surface or on 50mm wide wood poles, which spacing should not exceed 500 mm. To be stored in a well-ventilated room.

CUTTING

To cut the wood plastic composite material regular wood cutting devices are suitable, large tooth saw blades should be avoided.

DRILLING

To fix with screws it is always necessary to previously drill the screw holes into the wood plastic composite material. The drill should be smaller than the diameter of the screw. For instance, For a 4 mm diameter screw, the drill should be with 3mm diameter. During the sawing process the drill should occasionally be drawn out of the drilling hole, so the sawdust would get out of the hole.

MATERIALS AND WORK EQUIPMENT

Necessary materials:

- Terrace boards
- Starter clip
- Fixing clip
- Screws
- Beams

Work equipment:

- Cordless drill (drill and torx nozzle)
- Saw
- Securing straps
- Pencil
- Protective equipment (goggles, gloves etc.)

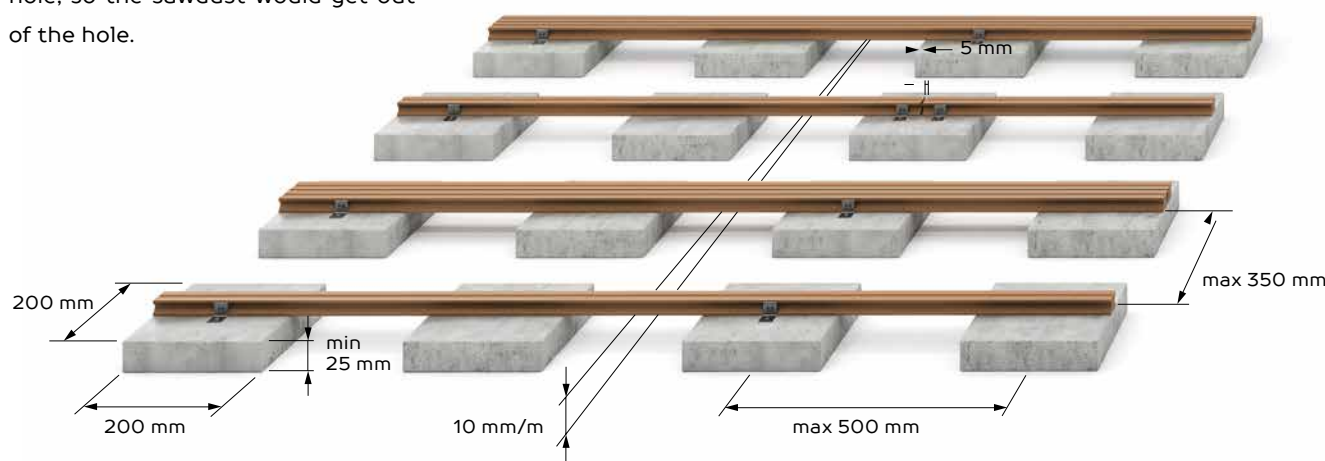


BASE CONSTRUCTION

Regular stone, metal and wooden solutions are suitable for the base construction of the terrace. The terrace boards are secured to the wooden or wood plastic composite beam. The beams must fall back on the base construction so that the distance of the support bases would not exceed 350 mm. The beams should be installed with maximum of 350 mm spaces and 5 mm space should be in the joints of the beams. Places where one terrace board is ending and a new one begins, should two beams installed next to each other. Peripheral beams should be

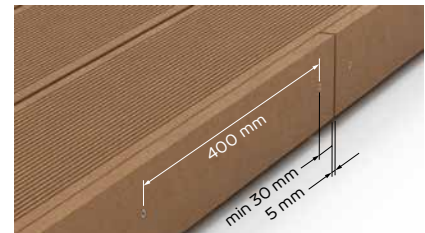
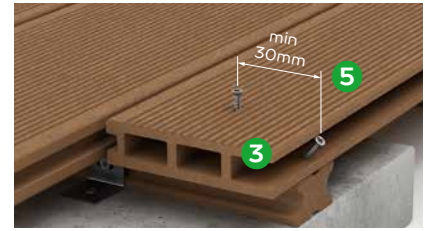
installed so that the terrace board would not extend the edge of the beam more than 30 mm. To install short terrace boards (starting from 40 mm), at least three base beams are necessary.

NB! The base construction should be formed in a way that the terrace would be with a slight slope (10 mm/m) to avoid water puddles.



INSTALLATION OF TERRACE BOARDS

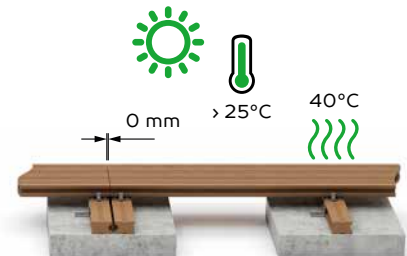
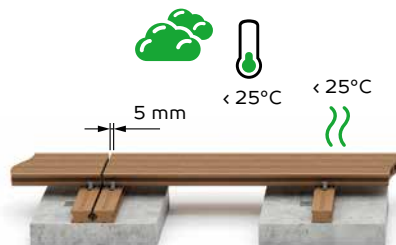
1. First terrace board should be fixed with a starter clip.
2. The next ones should be fixed with a fixing clip.
3. The last board should be fixed with a screw diagonally, from the edge of the board or right through from the middle of the board.
4. 5 mm space must remain in the joints of boards, contact space with edging board, house wall or some other objects.
5. By fixing the screw through the board, leave a 30 mm space between the board edge and securing space.
6. If the base beam is of wood plastic composite, then installation of screws must be made with pre-drilling.



To make boards with even spaces and fixing clips tightly in a groove, we recommend to use securing straps during the installation.

NB! Terrace boards made of wood plastic composite should not be installed with nails.

Under normal conditions a space of 5 mm should remain in the joints of the boards. In hot weather (from 25°C) when the sun shines directly to the terrace boards, it is not recommended to leave a space for expansion space.



COVERING EDGES AND CORNERS

Edge boards with measures of 80x15 mm and corner boards with measures of 42x42 mm made of wood plastic composite material are the most suitable to cover corners and edges. Fixing screws must be

installed after each 400 mm. The joints of an edge board and corner boards must have a 5mm space and the minimum distance of a fixing screw from the edge must be 30 mm.

USE AFTER THE INSTALLATION

During the first months a colour becomes lighter due to natural lighting conditions. This is an usual process regarding the mate-

rials containing wood. Therefore we recommend at first to occasionally move the location of the flower pots on the terrace.

Soovituslikud paigaldusmustrid



MAINTENANCE

OneWood terrace has very low maintenance cost, the terrace does not need as similar maintenance as the regular wood terrace. The terrace does not involve a costly and time-consuming staining, oiling or any other covering. Periodic cleaning and washing is enough to ensure the beautiful look of the outdoor terrace. Generally a brush, pressure washer, soap water and sponge will do the cleaning.

INSTRUCTION FOR MAINTENANCE

No.	Problem	Maintenance and solution
1.	Dust and dirt	To remove dust and dirt, the surface should regularly be cleaned with water and brush, by wiping at the same direction with the pattern of the terrace board. To remove stronger dirt, use a pressure washer, if necessary use soap water.
2.	Plants and leaves	Loose garbage should be removed with a brush and soaked with water. To remove stronger dirt, use a pressure washer, if necessary use soap water or weak aqueous solution of 2 % oxalic acid.
3.	Removing snow and ice	Snow and ice can be removed by a brush or plastic spade. To melt snow road salt (calcium chloride or sodium chloride) can be used. NB! Not to use a metal spade or any other tools damaging the surface.
4.	Salt residue	Loose salt residue should be wiped with a brushed and soaked with water, to remove stains, use washing detergent and warm water. For a stronger damage, the surface must be properly dried and to remove the salt residue, use fine sand paper.
5.	Rust	Remove loose dirt with a brush and soak with water, to remove stains use detergent and warm water. For stronger dirt use aqueous solution with low level of oxalic or phosphoric acid and soak with water.
6.	Cement	Remove cement pieces with a brush and wash with a pressure washer. Use a detergent and warm water to remove the stains. For a harder damage, let the surface dry properly and to remove cement use fine sand paper.
7.	Food and drink stains	Soap water, a detergent containing acetone or methanol are suitable for cleaning and wipe with a brush in parallel with the terrace board pattern. For harder dirt let the surface to dry properly, to remove the stains use fine sand paper and if necessary use once again a detergent.
8.	Colour and oil stains	Use soap water, detergent containing acetone or methanol to clean and then wipe with a brush in parallel with the terrace board pattern. For stronger dirt, let the surface dry properly, to remove stains use fine sandpaper and if necessary use once more the detergent. If you are working with paints and stains on a terrace, cover the terrace floor
9.	Mould	To prevent mould the surface should be regularly cleaned and washed. To remove mould use a pressure washer and wipe with a brush in parallel with the terrace board pattern. For stronger mould, use soap water or special anti-mould detergents that are on sale at shops.
10.	Scratches	Lighter scratches vanish within time, to remove deeper ones, use fine sandpaper and rub it in parallel with the terrace board pattern.



1. To clean the surfaces use solvents and detergents which pH is neutral. Stronger detergents may bleach and have a permanent impact on the surfaces colour.
2. Never use industrial chemicals to clean surfaces, because they may permanently bleach or damage the surface.
3. To prevent scratching, use only a soft bristled brush to clean surfaces.
4. Detergents containing oxalic acid and methanol should be used at low concentrations. If necessary slightly increase the concentration, by adding it to the water.
5. It is recommended to use sandpaper with grits between 40 and 100. Do not use a grinding machine!
6. It is not recommended to sand surfaces with wood pattern. Sanding removes the relief surface permanently.
7. When using a pressure washer the nozzle should not be closer than 300 mm to the terrace surface.

WARRANTY

Warranty provisions are derived from the legislation of the Republic of Estonia and granting the guarantee is primarily based on the warranty given by the manufacturer provided that these are not in contradiction with the laws of the Republic of Estonia. The warranty covers the product's deficiencies related to production or materials during the warranty period.

1. General warranty conditions

- 1.1 The warranty is valid for the product's purposeful use for 2 years, i.e. 24 months.
- 1.2. The warranty period starts with the day the product was delivered.

2. The conditions for the validity of the warranty are current regulations and instructions for installation and maintenance, which should be taken as the basis for the installation, use and maintenance of the product. The warranty shall be valid, if the product has been regularly maintained and used purposefully.

3. Warranty does not include:

- 3.1. Training about the installation, maintenance and use of the product.
- 3.2. Repair of failures resulting from transportation damages and other mechanical damages (vandalism, lightning, fire etc.).

The warranty does not cover the failures that resulted from insufficient maintenance, incorrect installation or repair works or general wear.



Produced in EU for nordic climate.

